

# SPEC SHEET + MEASUREMENTS



## OGIO® Transition 1/4-Zip. OG821

### Product photo



Transition easily between a corporate look and afterhours style in this double-knit piece that has stretch and OGIO edge.

- 11.4-ounce, 52/45/3 cotton/poly/spandex fleece
- OGIO heat transfer label for tag-free comfort
- Black grosgrain detail at zipper
- Metal molded zipper with debossed O on zipper pull
- Seaming details
- Matte black debossed O metal badge on front left hem

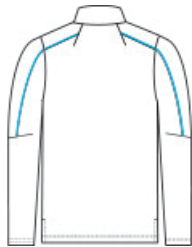
### CARE INSTRUCTIONS

Machine wash with like colors. Only non-chlorine bleach, when needed. Tumble dry low. Cool iron, if necessary.

### Sketches



front



back

# SPEC SHEET + MEASUREMENTS



OGIO® Transition 1/4-Zip. OG821

## PRODUCT MEASUREMENTS

	XS	S	M	L	XL	2XL	3XL	4XL
Body Length at Back	27	28	29	30	31	32	32 1/2	33
Chest	18	19 1/2	21	22 1/2	24	25 1/2	27 1/2	29 1/2
Sleeve Length from Center Back	33 3/4	34 1/2	35 1/4	36	36 3/4	37 1/2	38 1/4	39

**Body Length at Back:** Measured from high point shoulder to finished hem at back.

**Chest:** Measured across the chest one inch below armhole when laid flat.

**Sleeve Length from Center Back:** Measure from Center Back neck to shoulder point to sleeve hem.

## SIZE CHARTS

	XS	S	M	L	XL	2XL	3XL	4XL
Chest	32-34	35-37	38-40	41-43	44-46	47-49	50-53	54-57

# SPEC SHEET + MEASUREMENTS



OGIO® Transition 1/4-Zip. OG821

## HOW TO MEASURE

---



### CHEST

Measure under the arm and around the fullest part of the chest with arms down, keeping tape horizontal.

## COLORS

---



Blacktop  
Heather  
PMS BLACK  
C



Petrol Grey  
Heather  
PMS COOL  
GREY 10C